

Viewings

Viewings by arrangement only.
Call 0114 2666300 to make an appointment.

Vendors Comments

Add text here

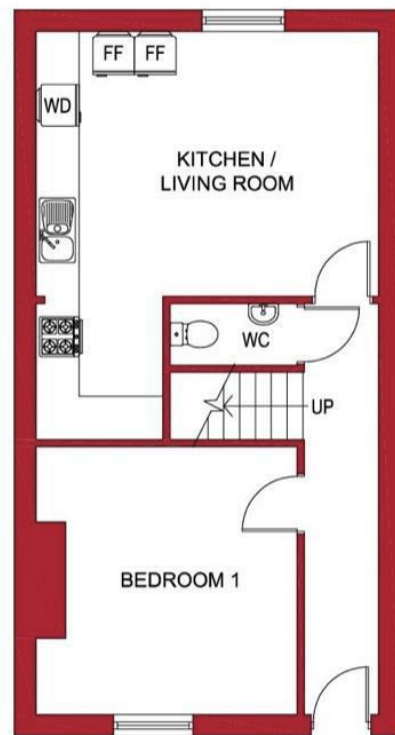
Energy Efficiency Rating		Current	Potential
Very energy efficient - lower running costs			
(92 plus) A			
(81-91) B			
(69-80) C			80
(55-68) D		65	
(39-54) E			
(21-38) F			
(1-20) G			
Not energy efficient - higher running costs			
England & Wales		EU Directive 2002/91/EC	

JC SALES & LETTINGS

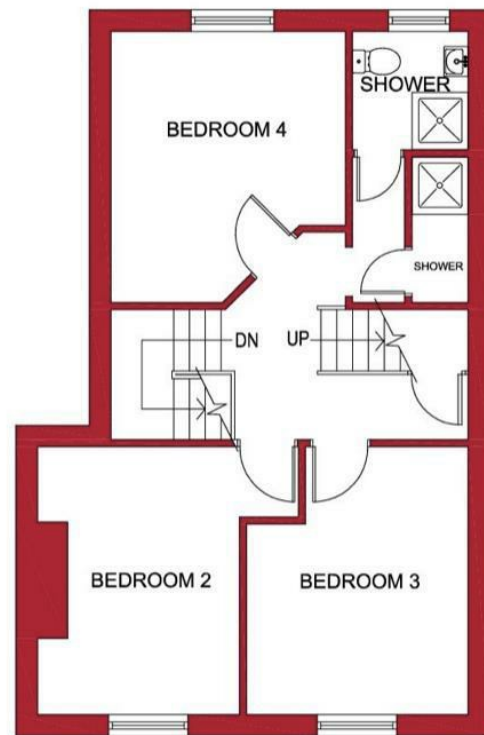
Tel: 0114 483 0038

E-mail: sales@jc-salesandlettings.com

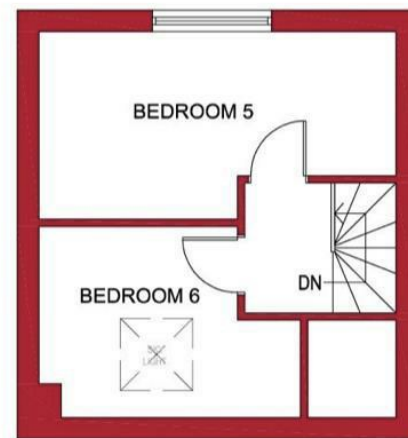
Website: www.jc-salesandlettings.com



GROUND FLOOR PLAN



FIRST FLOOR PLAN



SECOND FLOOR PLAN

65 Clarkehouse Road, Sheffield, S10 2LG

£2,392 Per month

- Student: £92 per person per week
- Bills included option available at £114 per person per week
- Bills included option includes gas, electricity, fibre internet, TV licence and water bills
- Situated extremely close to Bar One, The Student Union and Glossop Road
- Available for a group of 6
- Excellent location, close to an abundance of local amenities
- Well situated for both Sheffield Universities
- Two bathrooms and a separate WC
- Six large double bedrooms
- EPC Grade D

65 Clarkehouse Road, Sheffield S10 2LG

*** STUDENT *** £92 PER PERSON PER WEEK *** BILLS INCLUDED OPTION AVAILABLE AT £114 PER PERSON PER WEEK (Includes: Gas, electricity, fibre internet, water and TV licence) *** AVAILABLE FOR A GROUP OF 6 ***

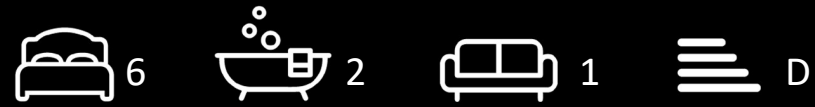
A TRULY STUNNING, six bedroom mid terrace property located extremely close to THE UNIVERSITY OF SHEFFIELD, the STUDENT UNION and GLOSSOP ROAD.

Ideal for STUDENTS studying at BOTH SHEFFIELD UNIVERSITIES and close to an abundance of local amenities.

In brief the accommodation comprises: large entrance hall, living room / kitchen, one large ground floor double bedroom, downstairs WC, three double bedrooms to the first floor, two shower rooms/WC and two large double bedrooms to the second floor.

An early viewing is highly recommended to avoid disappointment!

EPC Grade D.



Council Tax Band: C

